

Stationery Box

Set(s): Bordering on Romance (w: 125480, c: 125482);
Word Play (w: 120308, c: 120651)

Accessories:

8 ½ x 10 in. Whisper White cardstock (#100730)

Scored on the 10 in. side at: 2 in, 3 in, 9 in.

Scored on the 8.5 in side at 1 in, 2 in, 6 ½ in and 7 ½ in

Cut (see diagram)

4 ¼ x 3 ½ in. Whisper white for stamping/cutting flowers

1 x 3 in. for stamping/punching greeting

1 ½ x 2 in. Melon Mambo for punching/embossing

Black StazOn, Modern Label Punch #119849, Label Punch

Brights Crayons (Pacific Point, Melon Mambo, Old Olive), Aquapainters

White Tafetta ribbon (#109070), Dimensionals (#104430)

Basic Rhinestones (#119246)

-----Sizzix-----

Vintage Wallpaper Textured Folder #120175

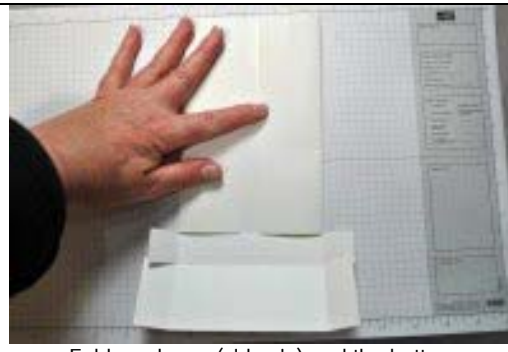
Square Lattice Textured Folder #119976

Framelits 'Labels' Collection #125598

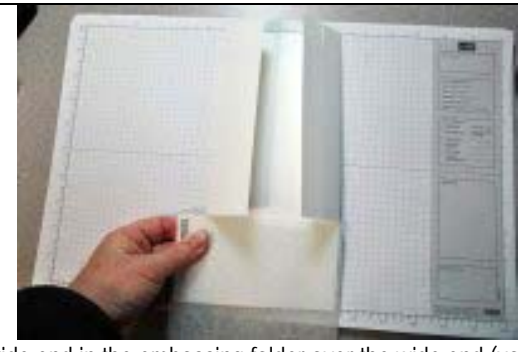
Sizzix Big Shot, Multi-purpose platform, standard Cutting pads (comes as a set #113439)



Take the cut and scored cardstock and fold on creases and hold as shown



Fold as shown (sides in) and the bottom flat with the left small flaps in



Place the wide end in the embossing folder over the wide end (you will have to fold in some flaps). You must be able to run this through the Big Shot



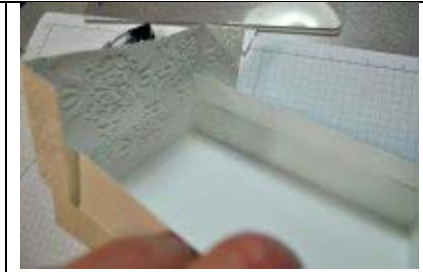
Run the cardstock and folder through on Tab 1 and between two clear plates



Finished should look like this



Fold as shown



The small corner tabs should be glued inside the long side bottom flaps shown



Glue the top of the long side flaps



Do both sides



Fold down the top flaps inside over the small square corner flaps



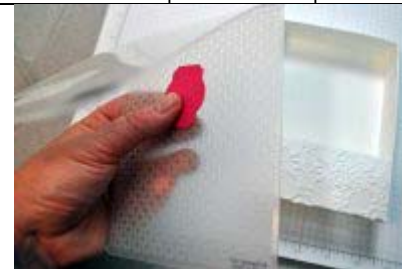
Put glue on the side flaps as shown



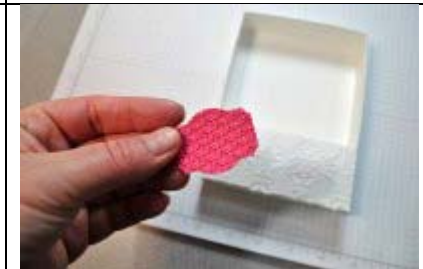
Adhere the side flaps down as shown



Punch out the Melon Mambo



Place the punched cardstock inside an embossing folder and run through the Big Shot



Take the embossed/punch piece and adhere it to the front of the box as shown



Take the white paper and stamp the flowers in Black StazOn



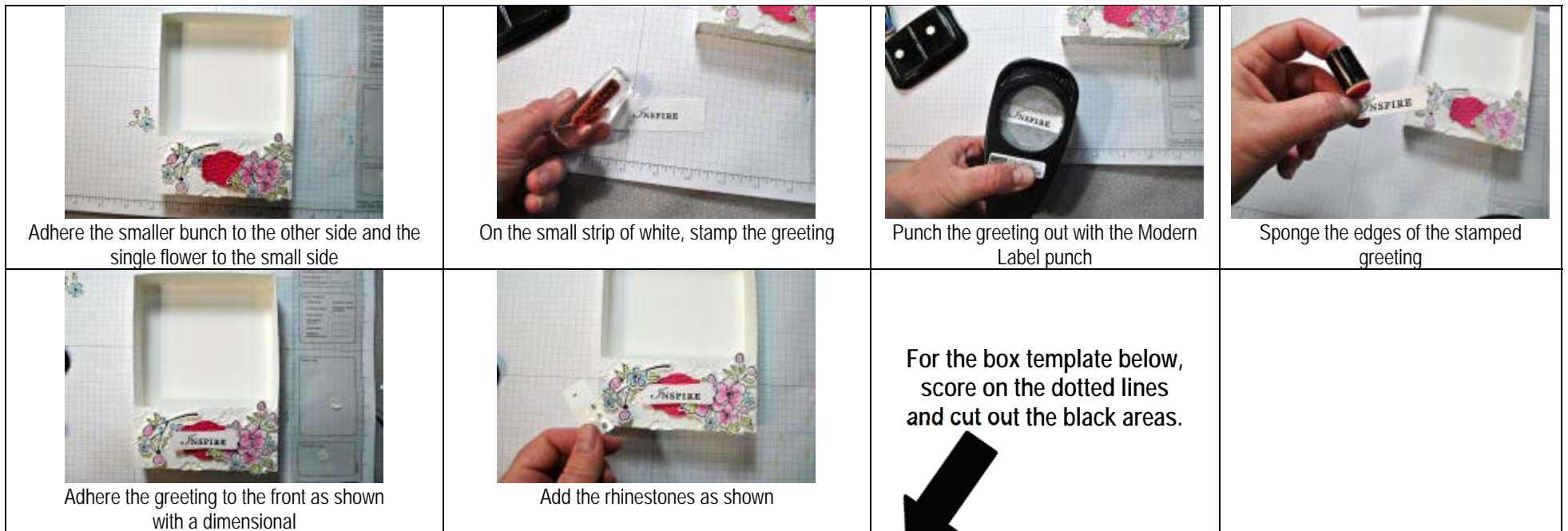
Color the flowers with the Watercolor Crayons and Aquapainters



Cut out the flowers, leaving 1/8th inch



Adhere the flowers to the box



2 in.

3 in.

9 in.

